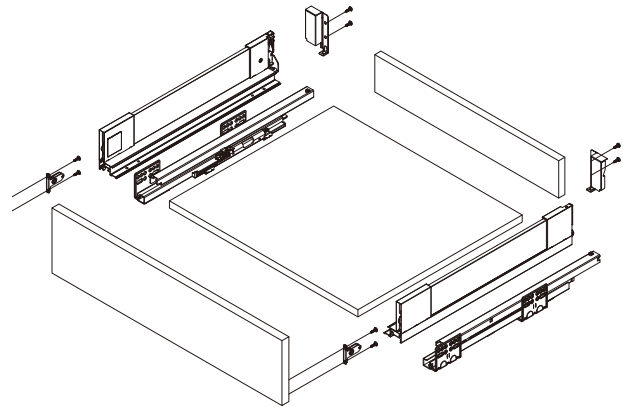




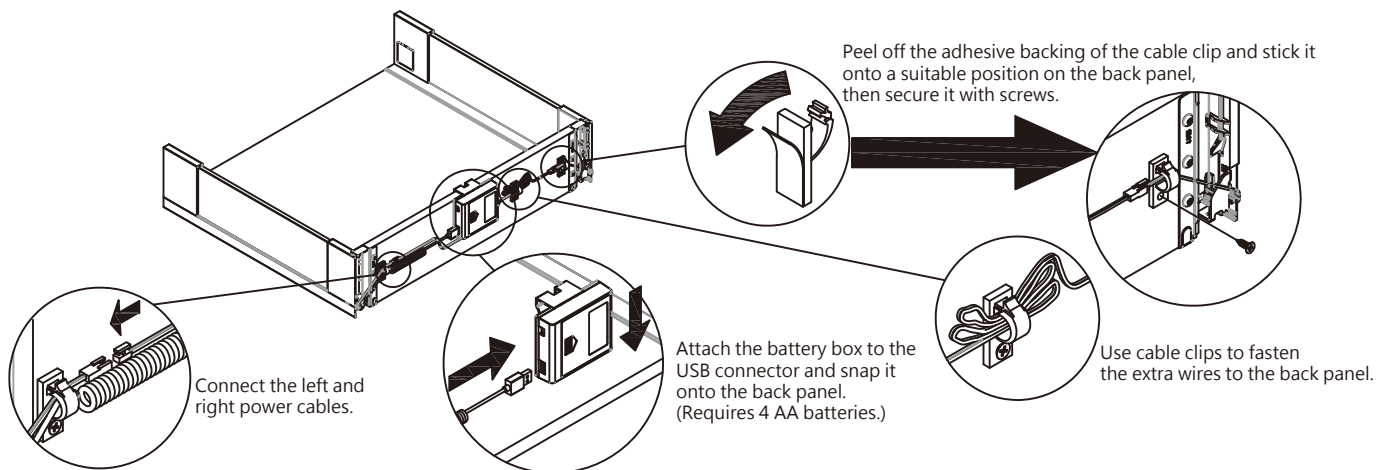
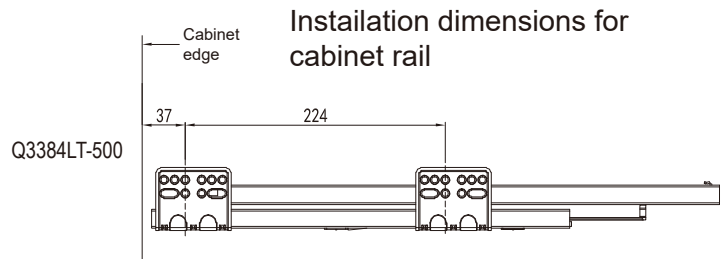
TOOLSLIDE Q3384LT Drawer slide system - Installation Instruction

	1.	Slide board (L/R) 1 pair
	2.	Slide (L/R) 1 pair
	3.	Fitting bag (L/R) 1 pair

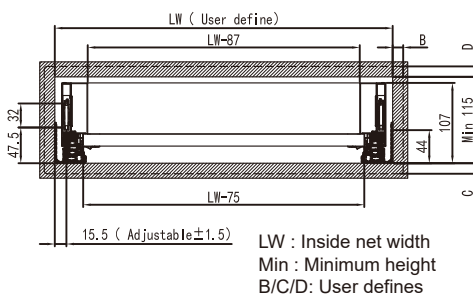


NOTES:

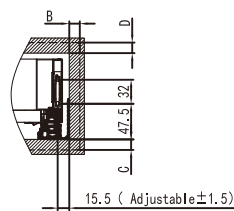
1. Nominal Length: 500mm(20")
2. Height: 84mm
3. Travel: Full Extension
4. Max. Loading: 35kg(77lb)
5. Function: 5cm Soft Closing, LED
6. Surface Finish: Powder coated
7. Color: Iron gray or White
8. Material: Galvanized steel
9. Packing: Unit Packed in 4pair/carton



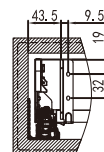
Installation size (mm)



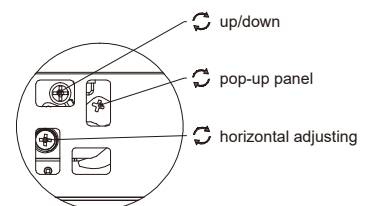
Front Aluminium Panel dimensions



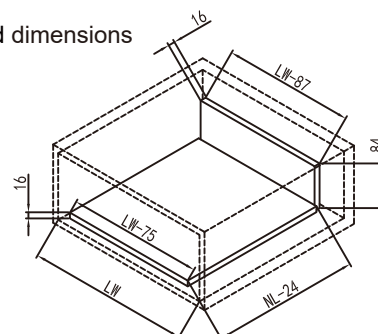
Rear Panel dimensions



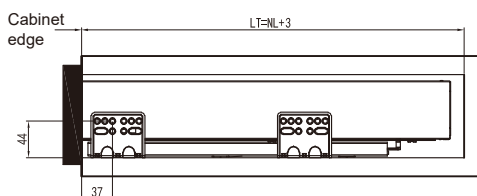
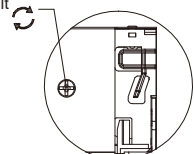
Adjustment mechanism



Drawer board dimensions



Front Panel tilt adjustment



LT : Min cabinate depth
NL : Nominal Length